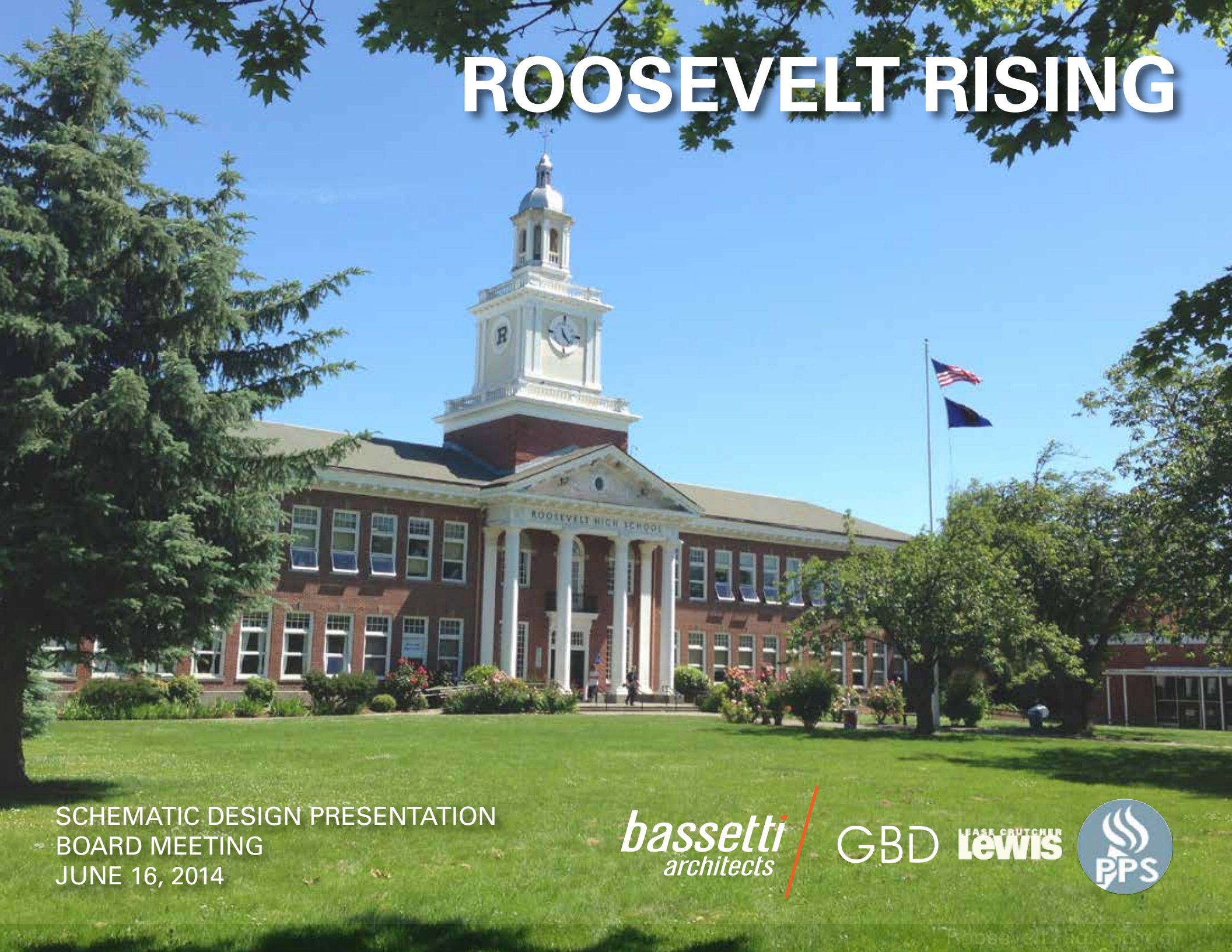


ROOSEVELT RISING



SCHEMATIC DESIGN PRESENTATION
BOARD MEETING
JUNE 16, 2014

bassetti
architects

GBD

LEASE CRUTCHER
Lewis



Design Parameters

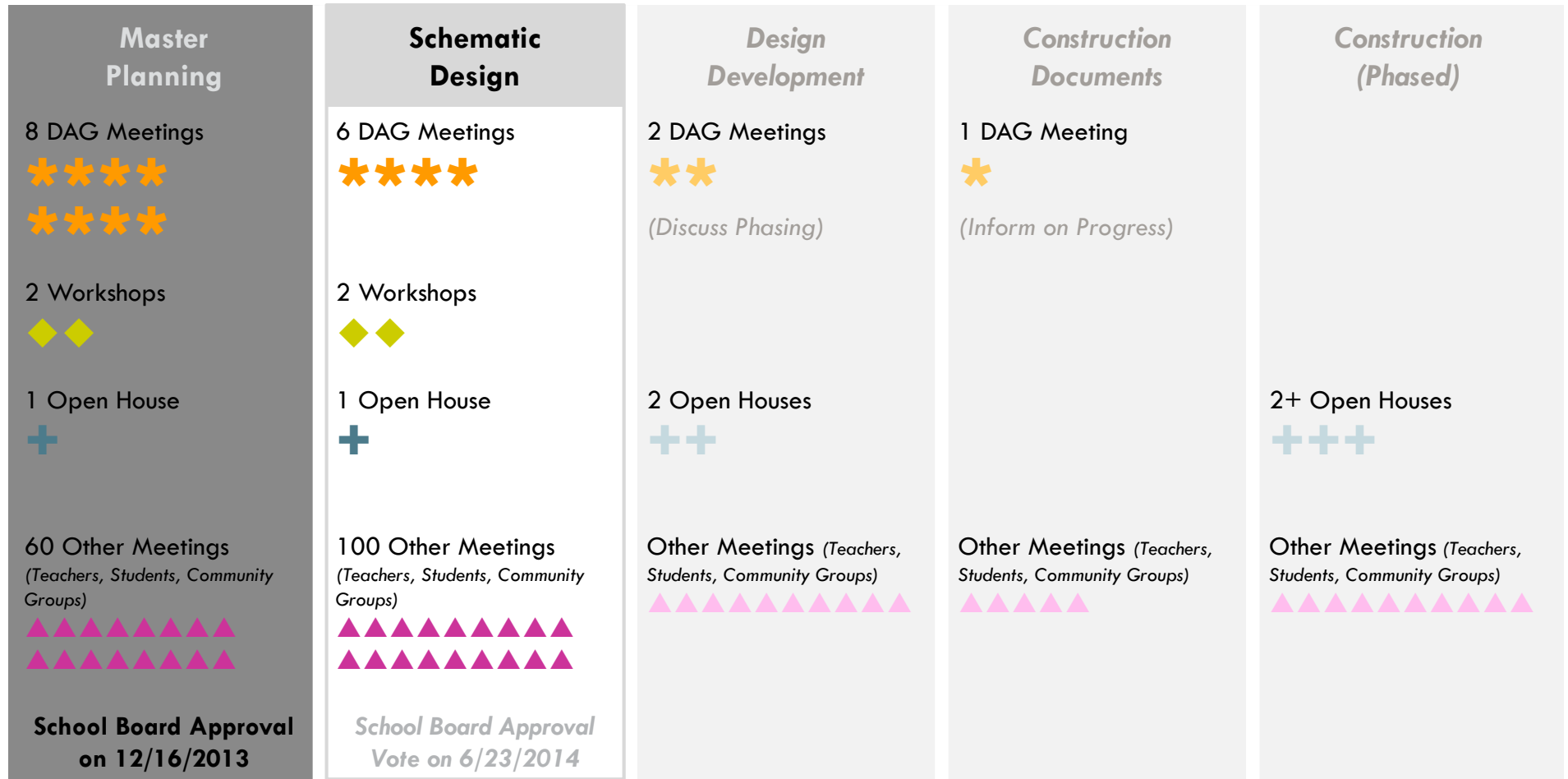
- Approved Educational Specification for 1700 students / classroom capacity 1350
- 100% Classroom Utilization
- 10 additional classrooms based on alignment with current RHS Master Schedule
- Additional Career Readiness/CTE Space based on Community Input to provide more than 6000 SF minimum as defined within Ed Spec



BASIS OF DESIGN

Community Engagement

ROOSEVELT COMMUNITY DESIGN PROCESS



Guiding Principles

A consolidation of district and community guiding principals, overarching goals, and visioning process translated into architecture design themes

- **Learning Focused**
- **Personalized**
- **Flexible and Adaptable**
- **Honor Community**
- **Safe and Secure**
- **Sustainable**
- **Respecting History and Context**



BASIS OF DESIGN

Community Priorities

Additional priorities that developed through the RHS community engagement process

+ Community Access

+ Security

+ Central Gathering - Indoor/Outdoor

+ CTE - Dedicated and Support Spaces



BASIS OF DESIGN

Career Readiness / CTE 28,435 SF

STEM 17,959 SF

STEM /Maker Lab 1 3,359 SF

Small Group Learning (1) 500 SF

Science Classrooms (6) 8,700 SF

Math Classrooms (6) 5,400 SF

Arts & Entertainment 6,850 SF

STEM /Maker Lab 2 2,000 SF

Small Group Learning (2) 1,000 SF

Outdoor Work Area 800 SF

Black Box Theater 1,600 SF

3D Arts Classroom 1,450 SF

Writing / Publishing / Social Justice Center 3,626 SF

Writing & Publishing Center 1,010 SF

Social Justice Lab 916 SF

Journalism Classroom 850 SF

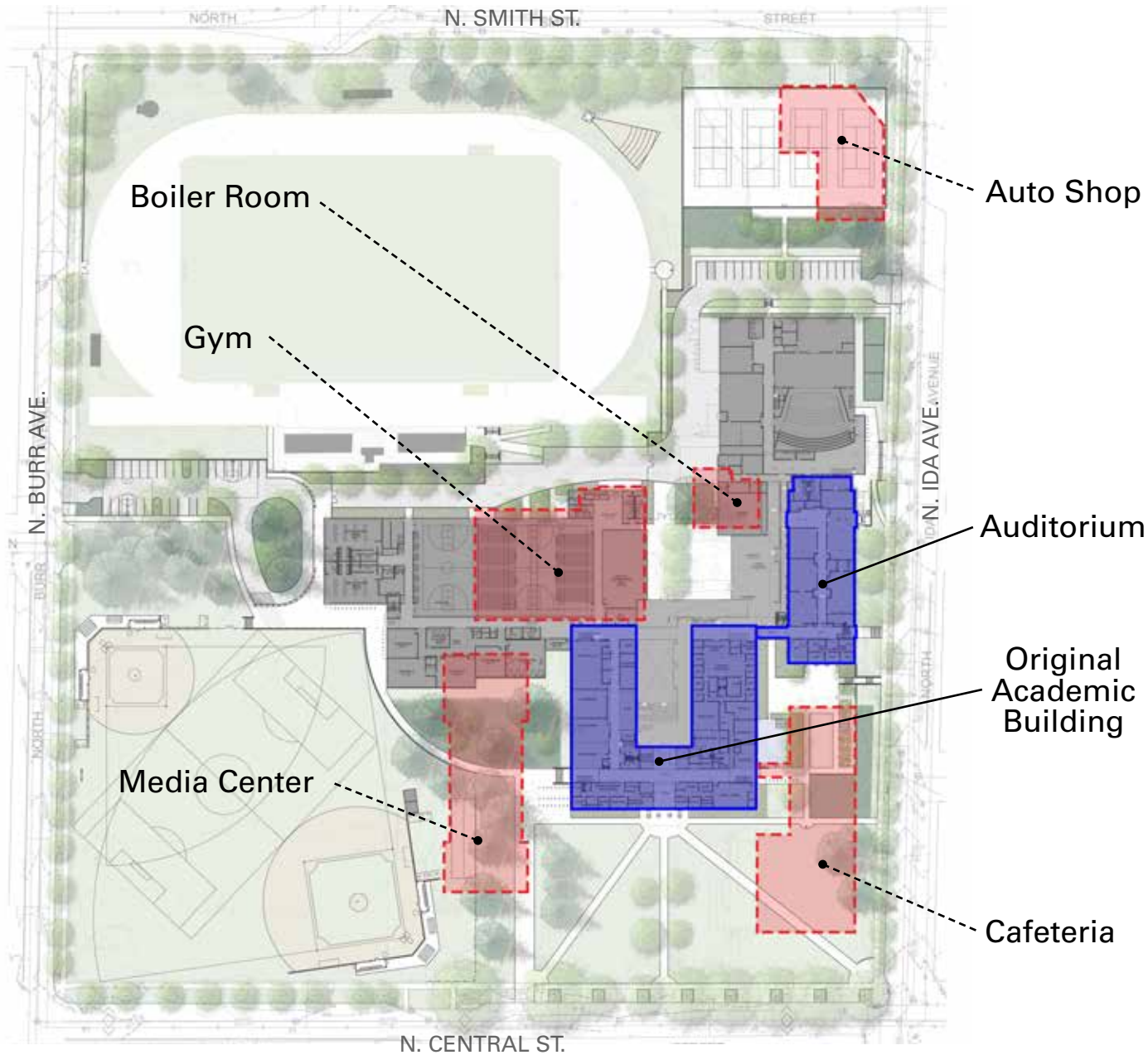
Digital Media Classroom 850 SF

Health & Social Services TBD

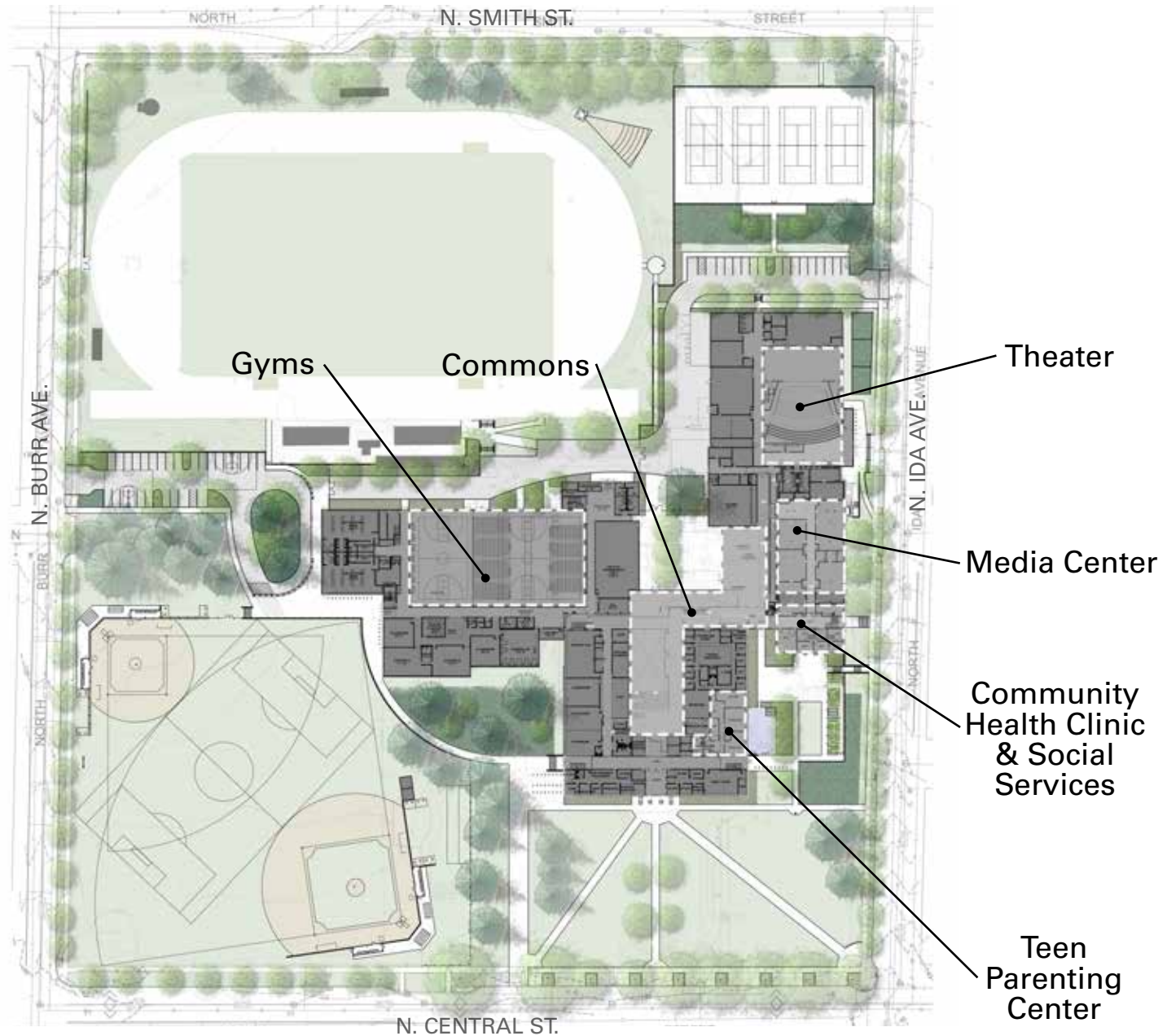


BASIS OF DESIGN

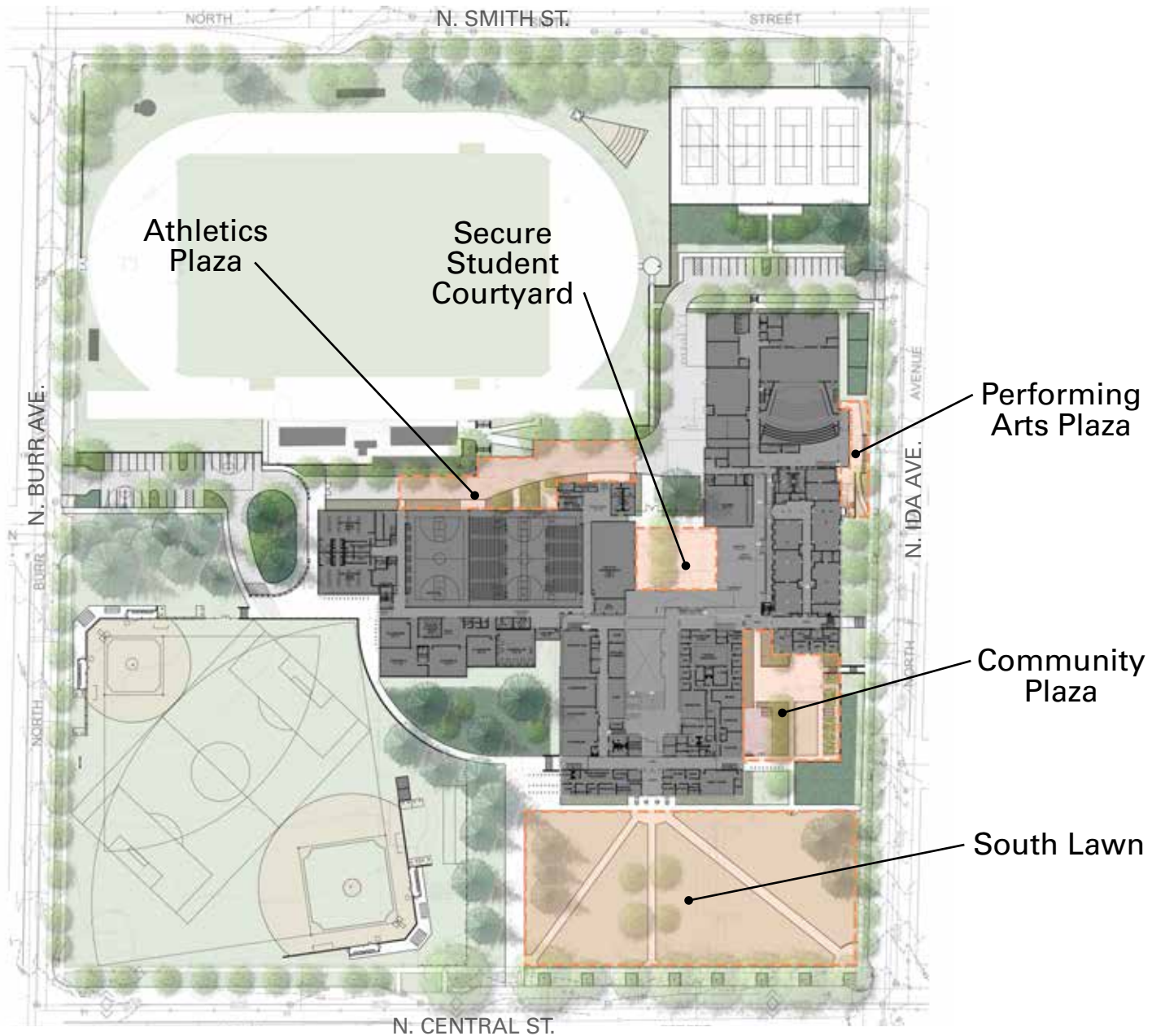
Existing Structures



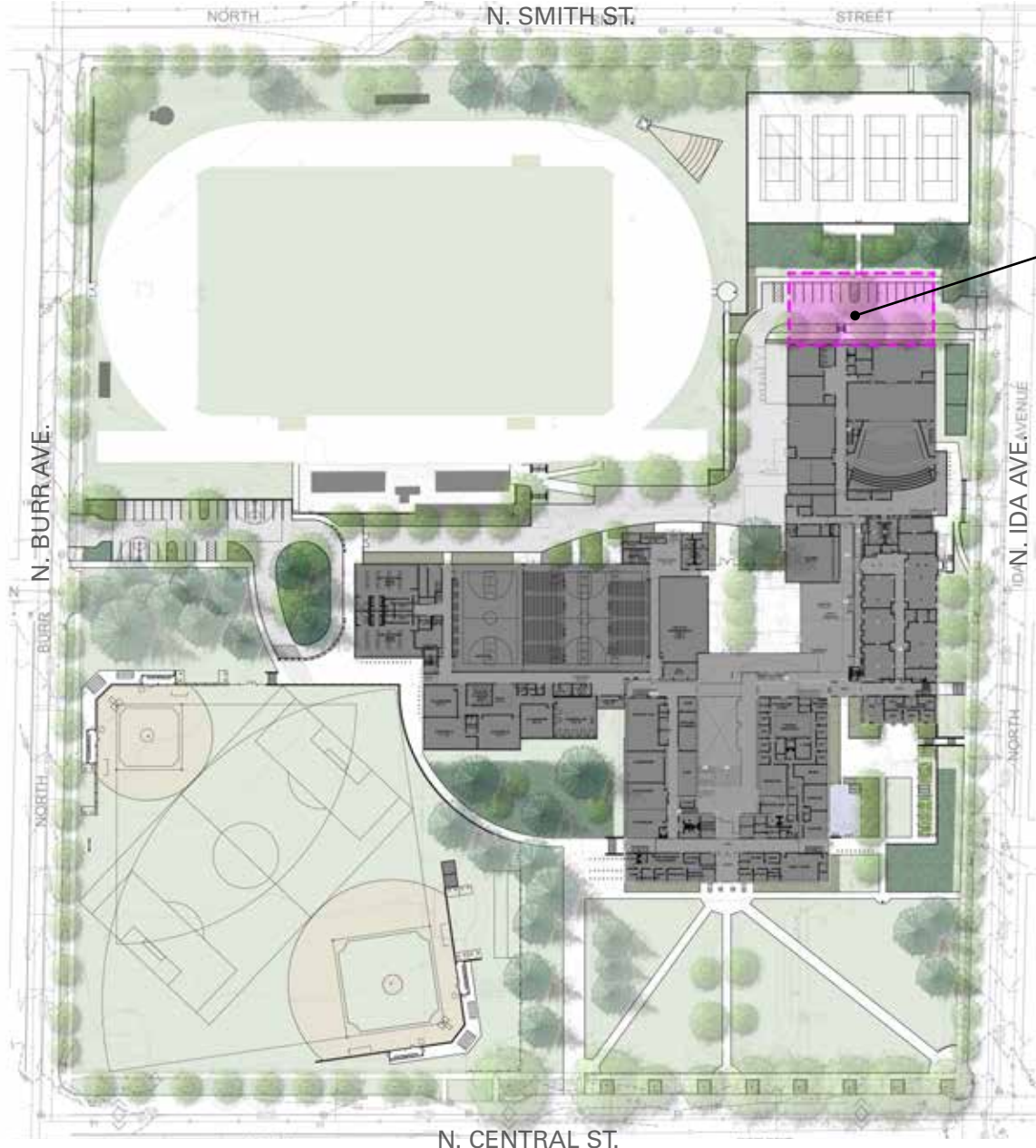
Primary Interior Spaces



Exterior Gathering Spaces

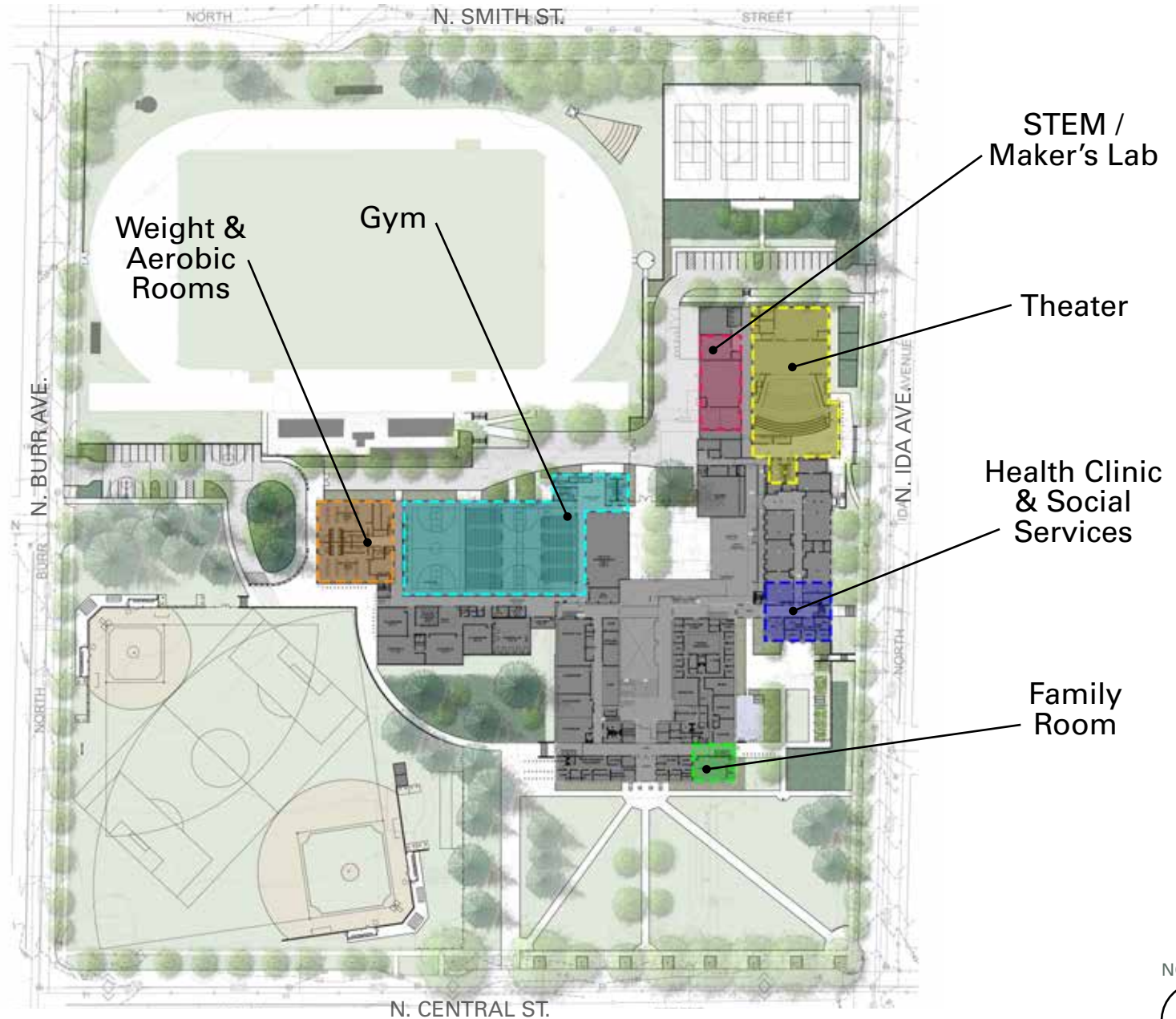


Future Addition



Added Classrooms for 350 STUDENTS

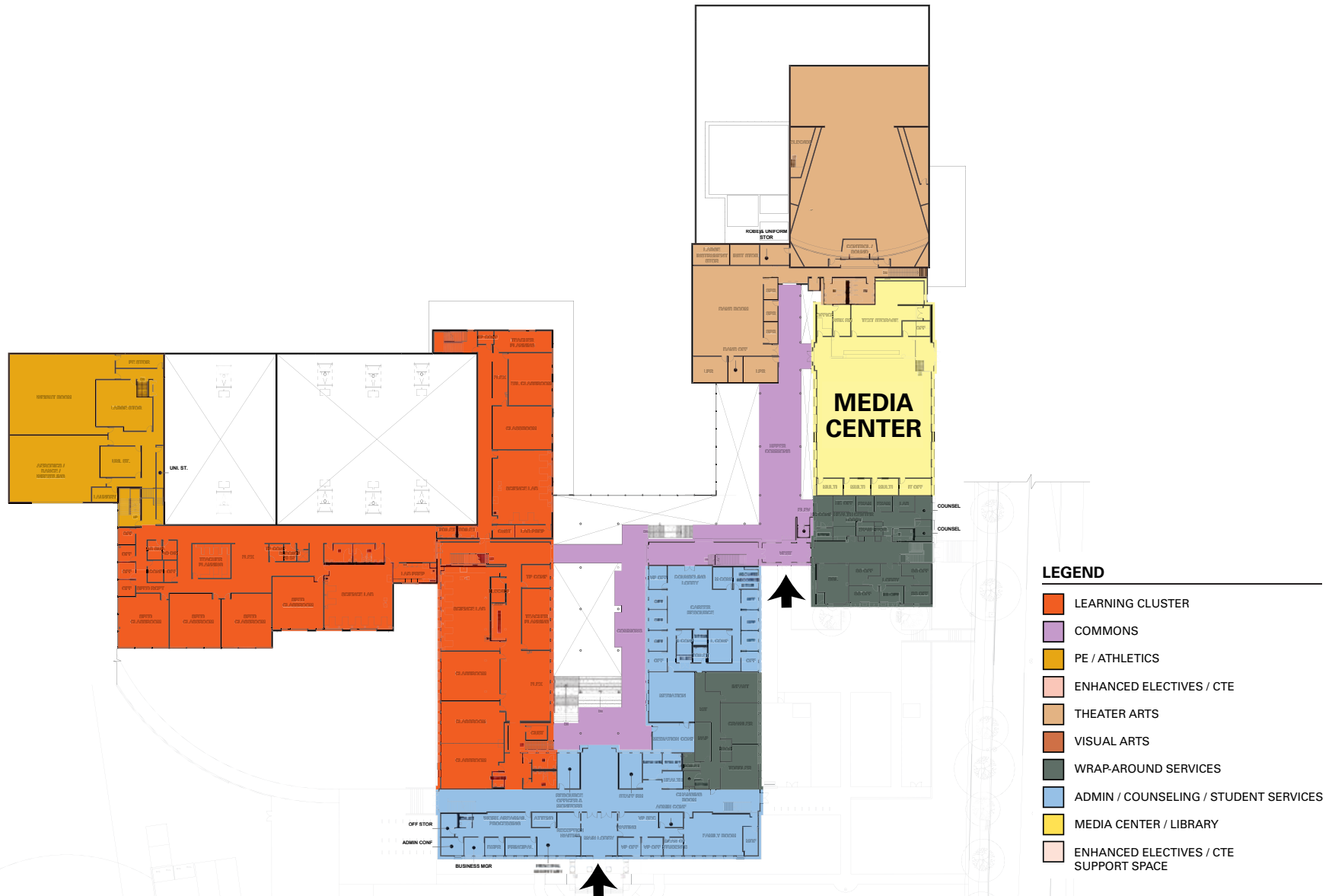
After Hours Community Access Areas



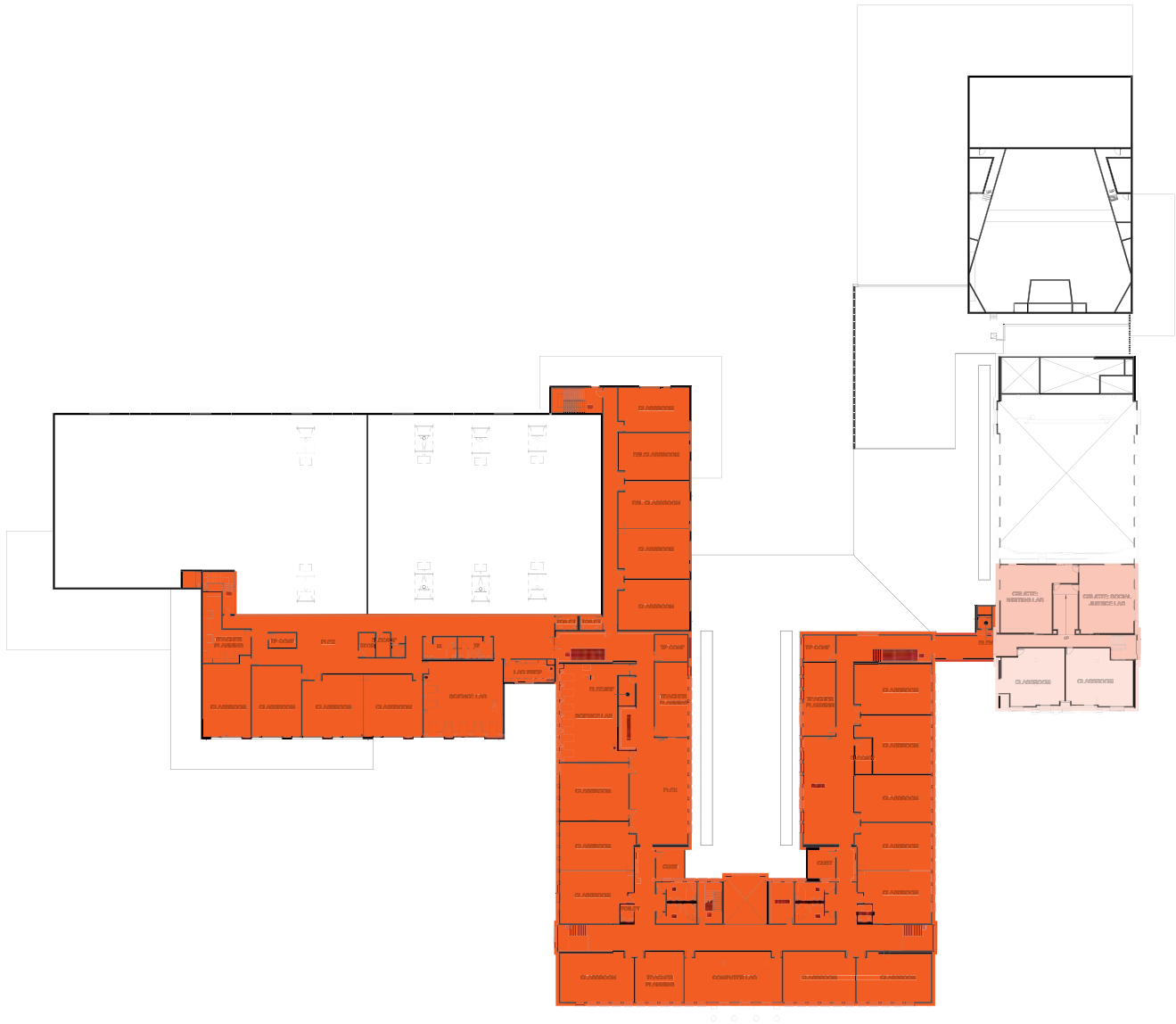
Ground Floor Plan



First Floor Plan



Second Floor Plan



LEGEND

- LEARNING CLUSTER
- COMMONS
- PE / ATHLETICS
- ENHANCED ELECTIVES / CTE
- THEATER ARTS
- VISUAL ARTS
- WRAP-AROUND SERVICES
- ADMIN / COUNSELING / STUDENT SERVICES
- MEDIA CENTER / LIBRARY
- ENHANCED ELECTIVES / CTE SUPPORT SPACE





View from Central and Ida Ave.

DESIGN REVIEW



View from SW School Addition

DESIGN REVIEW



View of Performing Arts Entry

DESIGN REVIEW



View of Student Courtyard

DESIGN REVIEW

Upcoming Phases

▪ **Design Development (June 2014 – Nov. 2014)**

- Working with building users on specific spatial needs
- Construction Phasing - in collaboration with staff & community
- Further refinement of design (building exteriors, mechanical systems, interior finishes, furnishings and fixtures)

▪ **Construction Documents (Dec. 2014 to March 2015)**

- Final drawings and specifications prepared for construction

▪ **Construction (Spring 2015 – Spring 2017)**

- Construction Starts – Spring 2015
- Construction Completion – Spring 2017
- Occupancy – Fall 2017